

**TCORX**  
FITNESS IN MOTION

# INSTRUCTION



# SRX85

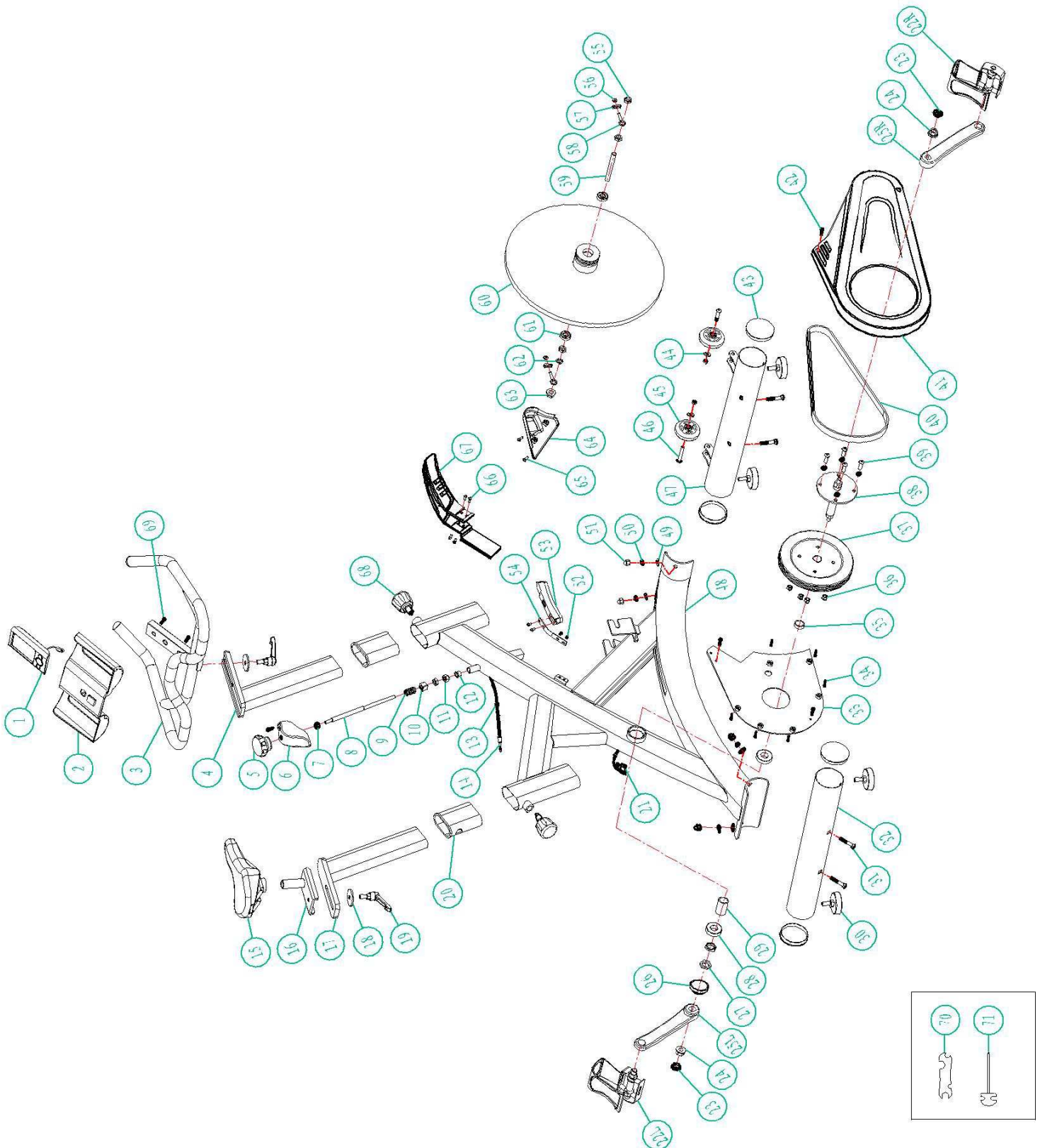


Rev : 00

Ed : 03/17



# EXPLOSIVE VIEW



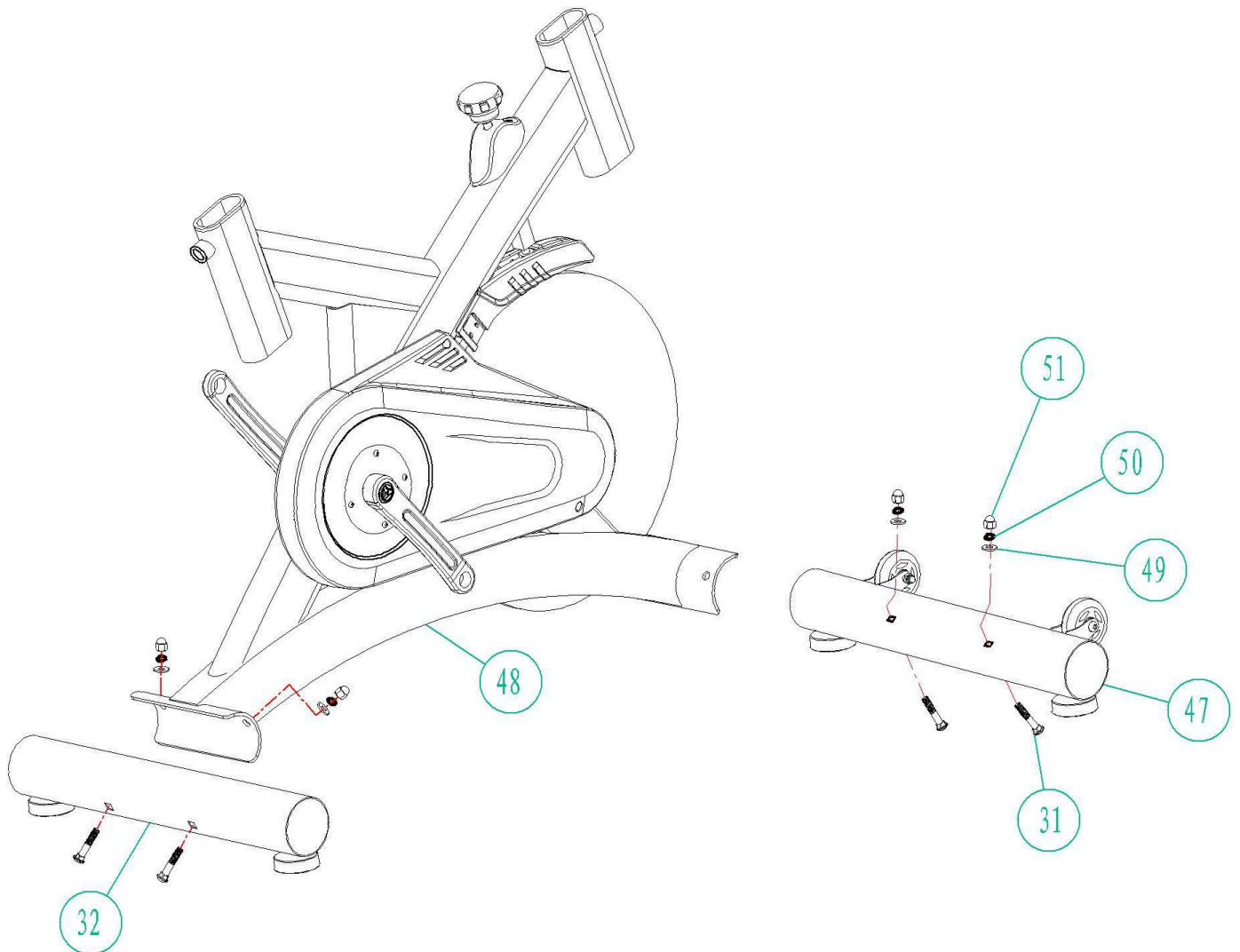
## PARTS LIST

PART NO.	DESCRIPTION	QTY
1	Computer	1 PC
2	Bottle cage	1 PC
3	Handlebar	1 PC
4	Handlebar post	1 PC
5	Brake knob	1 PC
6	Brake cover	1 PC
7	Hexagon nut M8	2 PCS
8	Brake bar	1 PC
9	Spring	1 PC
10	Square nut	1 PC
11	Cap nut M8	1 PC
12	Brake bushing $\phi$ 16	1 PC
13	Stopper $\phi$ 11.5	2 PCS
14	Sensor cable	1 PC
15	Seat	1 PC
16	Slider	1 PC
17	Seat post	1 PC
18	Washer $\phi$ 10x $\phi$ 38x4T	2 PCS
19	Knob M10	2 PCS
20	Tube clamp40x80	2 PCS
21	Sensor	1 PC
22	Pedal(L+R)	1 SET
23	Crank plug	1 SET
24	Flange nut M10x1.25	2 PCS
25	Crank(L+R)	1 SET
26	Alex bushing PVC	1 PC

27	Hexagon nut M20	2 PCS
28	Bearing 6004	2 PCS
29	Alex pipe	1 PC
30	Foot pad	4 PCS
31	Bolt M10x105	4 PCS
32	Rear tube	1 PC
33	Chain cover(inner)	1 PC
34	Screw M4x20	7 PCS
35	Pipe	1 PC
36	Nylon nut M8	4 PCS
37	Belt pulley	1 PC
38	Axle	1 PC
39	Hexagon screw M8x12	4 PCS
40	Belt	1 PC
41	Chain cover(outer)	1 PC
42	Screw M4.2x19	6 PCS
43	End cap 40x80	4 PCS
44	Washer $\phi 8 \times \phi 19 \times 1.5T$	2 PCS
45	Moving wheel	2 PCS
46	Hexagon nut M8x38	2 PCS
47	Front tube	1 PC
48	Main frame	1 PC
49	Washer $\phi 8 \times \phi 19 \times 1.5T$	4 PCS
50	Spring washer $\phi 10$	4 PCS
51	Cap nut M10	4 PCS
52	Hexagon nut M12x6T	2 PCS
53	Brake pad	1 PC
54	Brake shrapnel	1 PC
55	Hexagon nut M12x6T	3 PCS

56	Nylon nut M6	2 PCS
57	Board	2 PCS
58	Adjuster $\phi$ 12	2 PCS
59	Flywheel axle $\phi$ 12	1 PC
60	Flywheel 20kg	1 PC
61	Bearing 6001	2 PCS
62	Washer $\phi$ 12x $\phi$ 18x2t	1 PC
63	Flange nut M12	1 PC
64	Cover L	1 PC
65	Screw M5x12	3 PCS
66	Screw M4x10	4 PCS
67	Flywheel trim cover	1 PC
68	Lock pin M16	2 PCS
69	Screw	2 PCS
70	Open wrench	1 PC
71	Harpoon wrench	1 PC

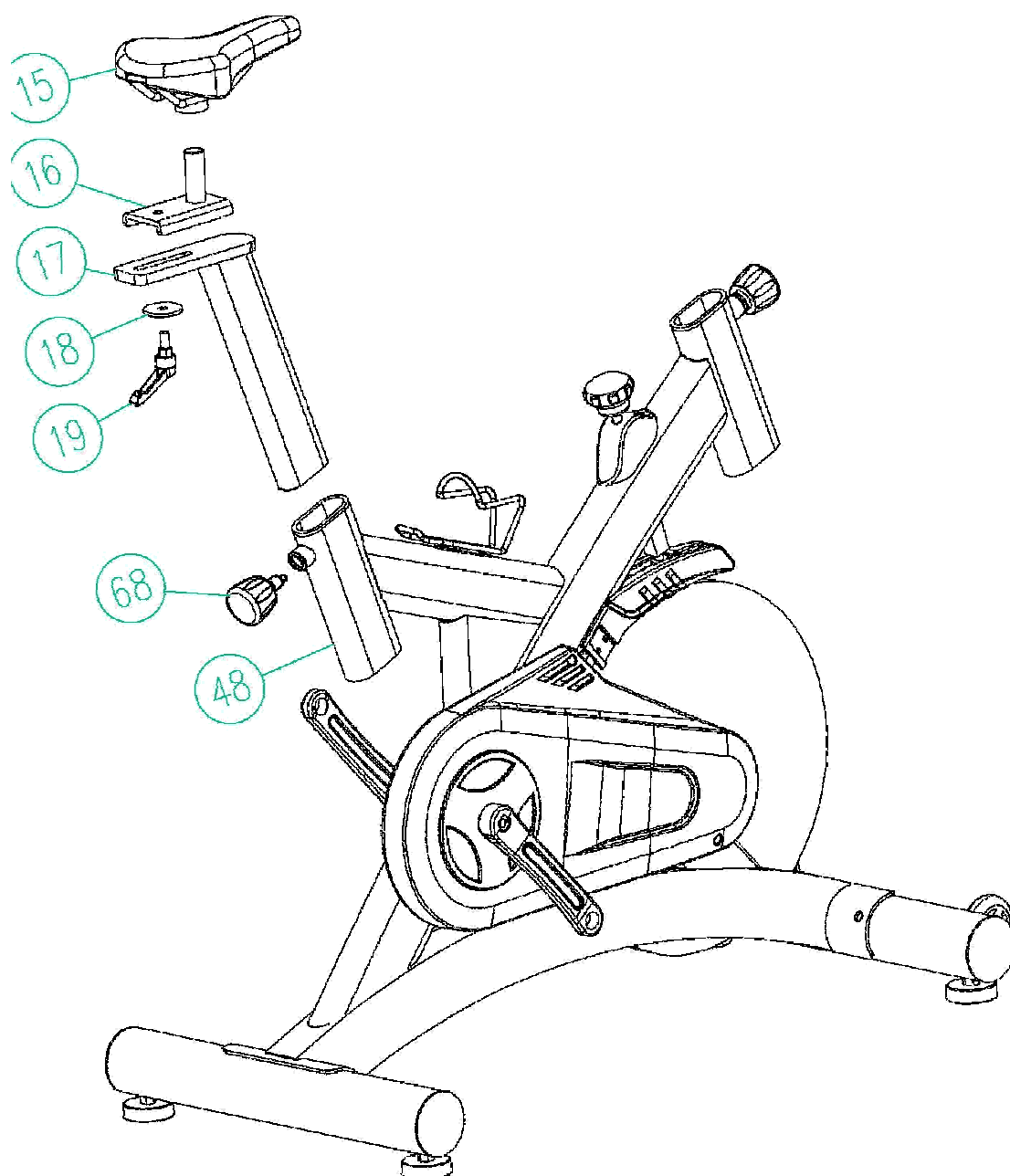
## ASSEMBLY INSTRUCTION



### STEP 1

Attach the front tube (47) to the main frame using two sets of bolts (31), washers (49), spring washers (50) and cap nuts (51).

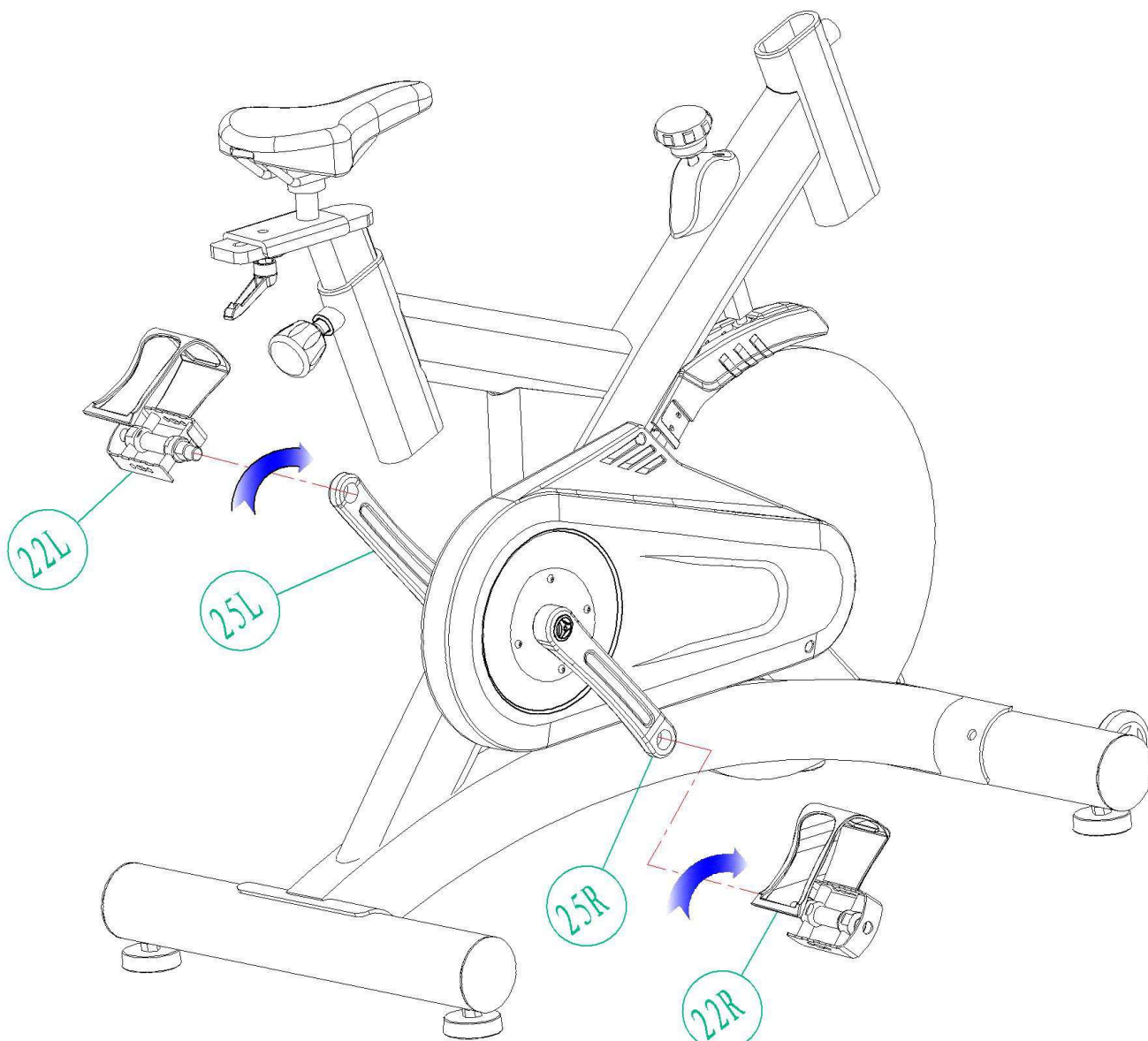
Attach the rear tube (32) to the main frame same as the front tube.



## STEP 2

Fix seat(15) on the slider(16) of seat post (17).

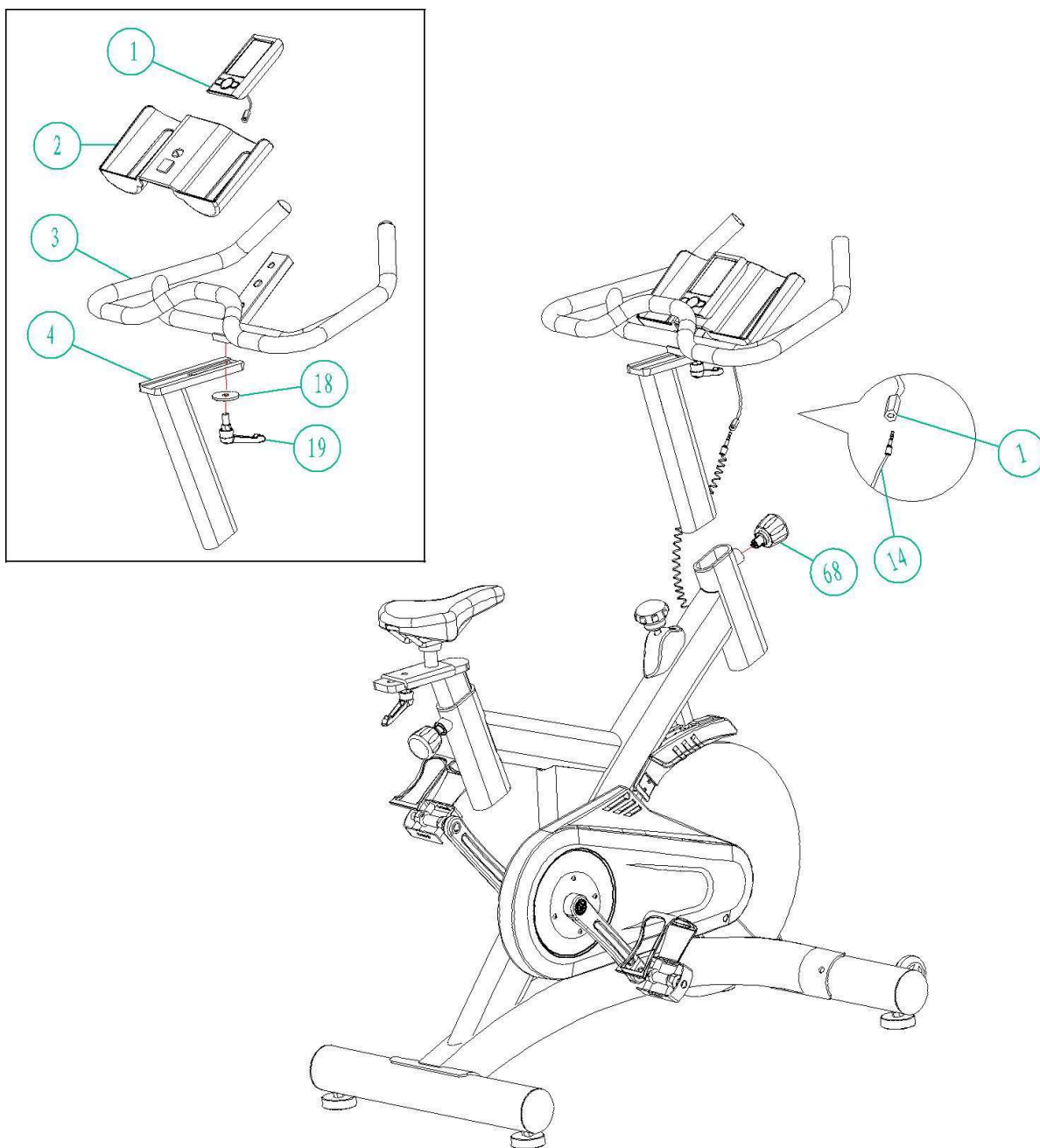
Put seat post (17) insert main frame(48) with knob(19),washer(18) and then adjust height by lock pin(68).



### STEP 3

The pedals (22L and 22R) are marked “L” and “R”-left and right. Connect them to their appropriate crank set(25L and 25R). The right crank set is on the right hand side of the cycle as you sit on it. Note that the Right pedal should be threaded on clockwise and the left pedal on anti-clockwise.





## STEP 4

Put handlebar post(4) insert main frame with lock pin(68) and then adjust height.

Fix handlebar(3) on handlebar post(4) using washer(18) and knob(19).

And fix the computer holder(2) on the handlebar(3),put computer(1) into computer holder(2),then insert the sensor plug (14) into the sensor joint of computer.

Now your spinning bike is finished for use.

**FRONT VIEW****HOW TO REMOVE BATTERY:**

1. Pull off the battery cover and place one of CR2032 3V battery into battery housing on back of monitor, please refer to below illustrations.
2. Insure batteries are correctly positioned and battery springs are in proper contact with batteries.
3. Replace battery cover and insure it is tightly closed.
4. Battery life is approx. 1 year under normal usage.
5. If the display is illegible or only partial segments appear, remove batteries and wait 15 seconds before reinstalling.
6. Removing the batteries will erase computer memory.

## KEY GUIDE

ENTER:

1. Press this button to enter setting mode.  
Normal→Time→DIST→CAL→T.H.R
2. Press this button to confirm the setting values
3. Hold 3 seconds to reset all of the values to zero.

UP: Increase the setting value of the following functions.  
Time→DIST→CAL→T.H.R

DOWN: Decrease the setting value of the following functions.  
Time→DIST→CAL→T.H.R

## FUNCTIONS AND OPERATIONS

### **AUTO ON/OFF**

The monitor will wake up automatically if the exercise machine is in motion. If stop exercising for over 4 minutes, monitor will turn off and reset all function values to zero.

### **TIME:**

press the button of ENTER to TIME function and press the UP or DOWN button to enter the value you want.

Count up:

Without setting the time value, the monitor will count up the time from 00:00~99:59.

Count down:

Setting the exercise time from 1:00~99:00 minutes, the monitor will count down from your setting values. Once reach setting value, monitor will alarm.

### **SPEED:**

Displays your workout speed in M/KM per hour .The monitor will display the current speed from 0.00 ~ 99.9 Km or Mile per hour.

### **RPM:**

Displays your workout RPM. The monitor will display the current RPM from 15 ~ 999

### **DISTANCE:**

press the button of ENTER to DIS function and press the UP or DOWN button to enter the value you want.

Count up:

Without setting the distance value, the monitor will count up the distance from 0.1~999.0Km or Mile

Count down:

Setting the exercise time from 1.0~999 Km or Mile, the monitor will count down from your setting values. Once reach setting value, monitor will alarm.

**CALORIE:**

press the button of ENTER to CAL function and press the UP or DOWN button to enter the value you want.

Count up:

Without setting the distance value, the monitor will count up the distance from 0.1~999.0.

Count down:

Setting the exercise calorie from 1.0~999, the monitor will count down from your setting values. Once reach setting value, monitor will alarm.

**PULSE (Target Heart Rate):**

press the button of ENTER to T.H.R function and press the UP or DOWN button to enter the value you want

Pulse Limit:

Setting the value of pulse limit between 60 to 220, the monitor will measure your heartbeats. Once reach setting value, monitor will flash until your heartbeats under your setting value.

Place the palms of your hands on the both of the contact pads and the monitor will show up your heartbeat rate in beat per minute (BPM) on the LCD display.

NOTE:

If no pulse signal input within 16 seconds, the display will indicate "P". It is a power saving device. Customer can press key to restart Pulse function.

**CAUTION:**

Operating temperature: 0°C - +50°C.

Storage temperature: -10°C - +60°C.



GARLANDO SPA

Via Regione Piemonte, 32 - Zona Industriale D1

15068 - Pozzolo Formigaro (AL) - Italy

[www.toorx.it](http://www.toorx.it) - [info@toorx.it](mailto:info@toorx.it)