

**TCORX**  
FITNESS IN MOTION

# INSTRUCTION



# SRX 500



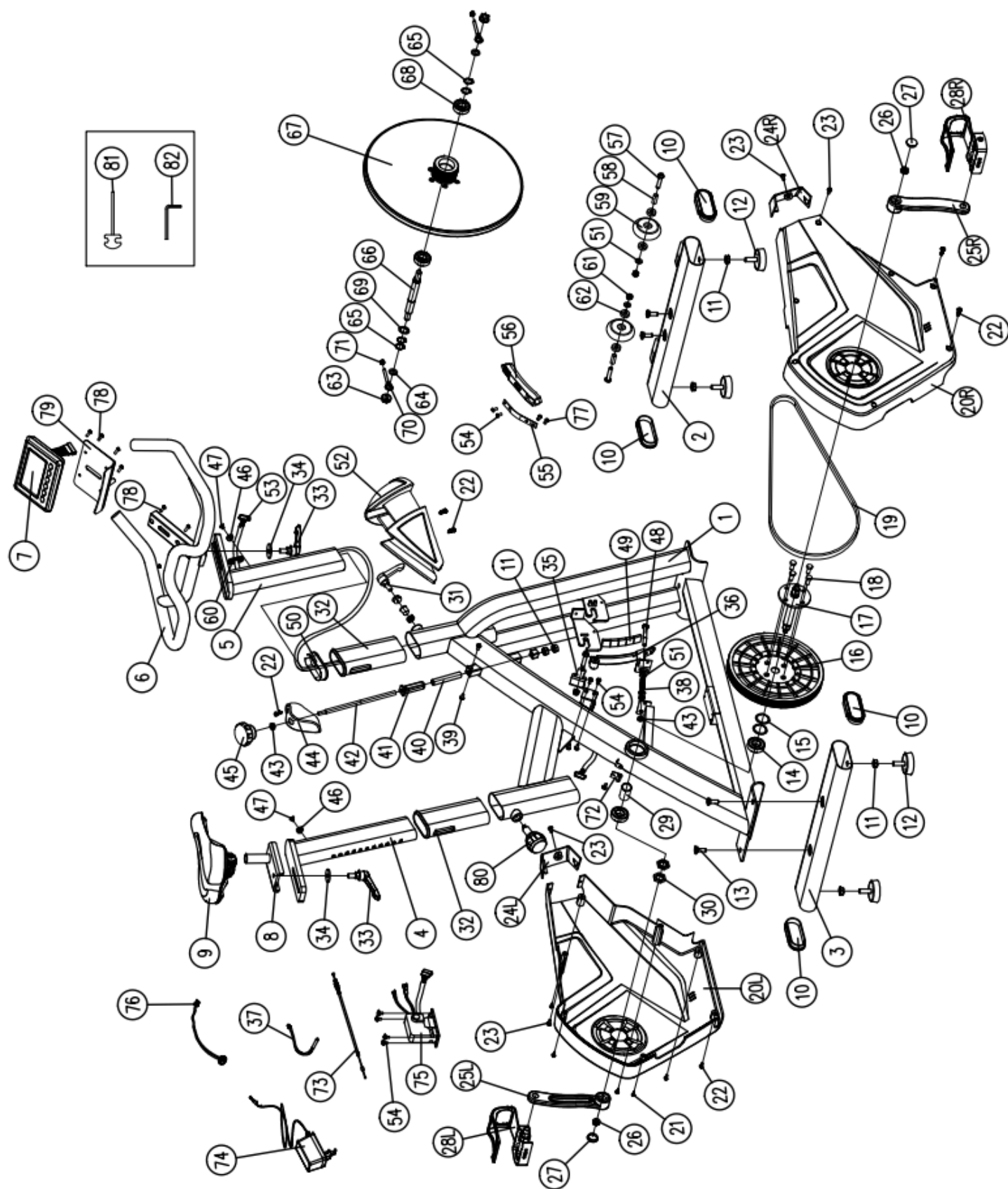
Cod : GRLDTCORXSRX500

Rev : 01

Ed : 09/19



EXPLOSIVE VIEW



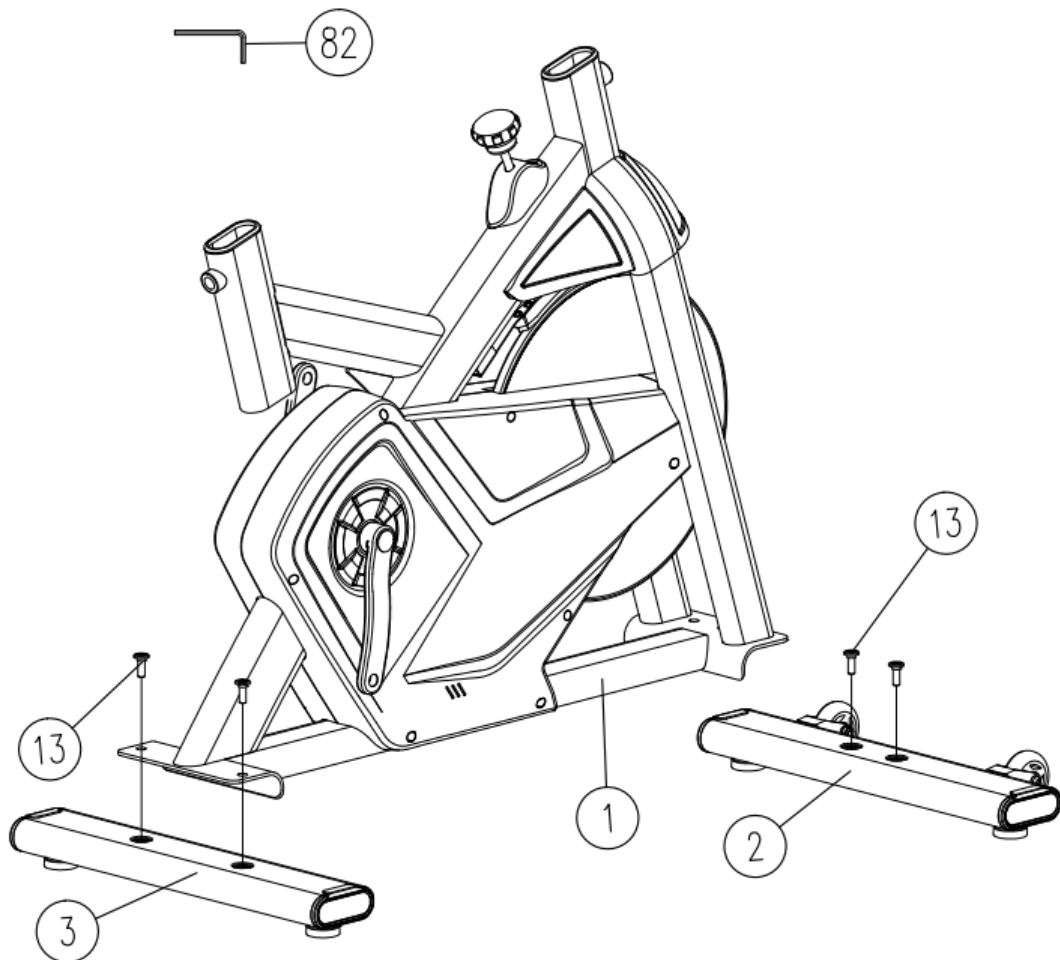
## PARTS LIST

PART NO.	DESCRIPTION	QTY
1	Main frame	1 PC
2	Front tube	1 PC
3	Rear tube	1 PC
4	Seat tube	1 PC
5	Handlebar post	1 PC
6	Handlebar	1 PC
7	Computer	1 PC
8	Slider	1 PC
9	Seat	1 PC
10	End cap	4 PCS
11	Hexagon nut M10	6 PC
12	Food pad	4 PCS
13	Step screw	4 PCS
14	Bearing	2 PCS
15	Flat washer $\phi 20$	3 PCS
16	Belt pulley	1 PC
17	Alex	1 PC
18	Hexagon screw	4 PCS
19	Belt	1 PC
20	Chain cover(R+L)	1 SET
21	Tapping screw	4 PCS
22	Screw	7 PCS
23	Screw M5*10L	4 PCS
24	Trim cover(R+L)	1 SET
25	Crank(R+L)	1 SET
26	Flange nut M10	4 PCS

27	Crank plug	2 PCS
28	Pedal (L+R)	1 SET
29	Pipe	1 PC
30	Hexagon nut	2 PCS
31	L knob	1 PC
32	Tube clamp	2 PCS
33	L knob	2 PCS
34	Flat washer $\phi 10$	2 PCS
35	Magnetic steel frame holder	1 PC
36	Magnetic steel frame	1 PC
37	Cable	1 PC
38	Limit spring	1 PC
39	Screw M5*6L	2 PCS
40	Brake limit bushing	1 PC
41	Brake nylon bushing	1 PC
42	Brake rod	1 PC
43	Hexagon nut M8	3 PCS
44	Brake trim cover	1 PC
45	Brake knob	1 PC
46	Limit bushing	2 PCS
47	Screw M4.2	2 PCS
48	Hexagon screw M8	1 PC
49	Strong magnets	10 PCS
50	Flat elliptic pipe plug	1 PC
51	Flat washer	4 PCS
52	Flywheel trim cover	1 PC
53	Cable	1 PC
54	Screw M5	11 PCS
55	Brake shrapnel	1 PC

56	Brake pad	1 PC
57	Screw M8	3 PCS
58	Plastic bushing	2 PCS
59	PU moving flywheel	2 PCS
60	Cable plug	1 PC
61	Nylon cap M8	3 PCS
62	Plastic bearing	4 PCS
63	Flange nut M12	2 PCS
64	Flat washer	2 PCS
65	Ring	4 PCS
66	Flywheel axle	1 PC
67	Flywheel	1 PC
68	Bearing	2 PCS
69	Corrugated gasket	3 PCS
70	Adjuster	2 PCS
71	Nylon cap M6	2 PCS
72	C clip	1 PC
73	Cable	1 PC
74	Adapter	2 PCS
75	Motor	1 PC
76	DC cable	1 PC
77	Hexagon screw	2 PCS
78	Screw	6 PCS
79	I-pad holder	1 PC
80	Knob	1 PC
81	Harpoon wrench	1 PC
82	Hexagon wrench	1 PC

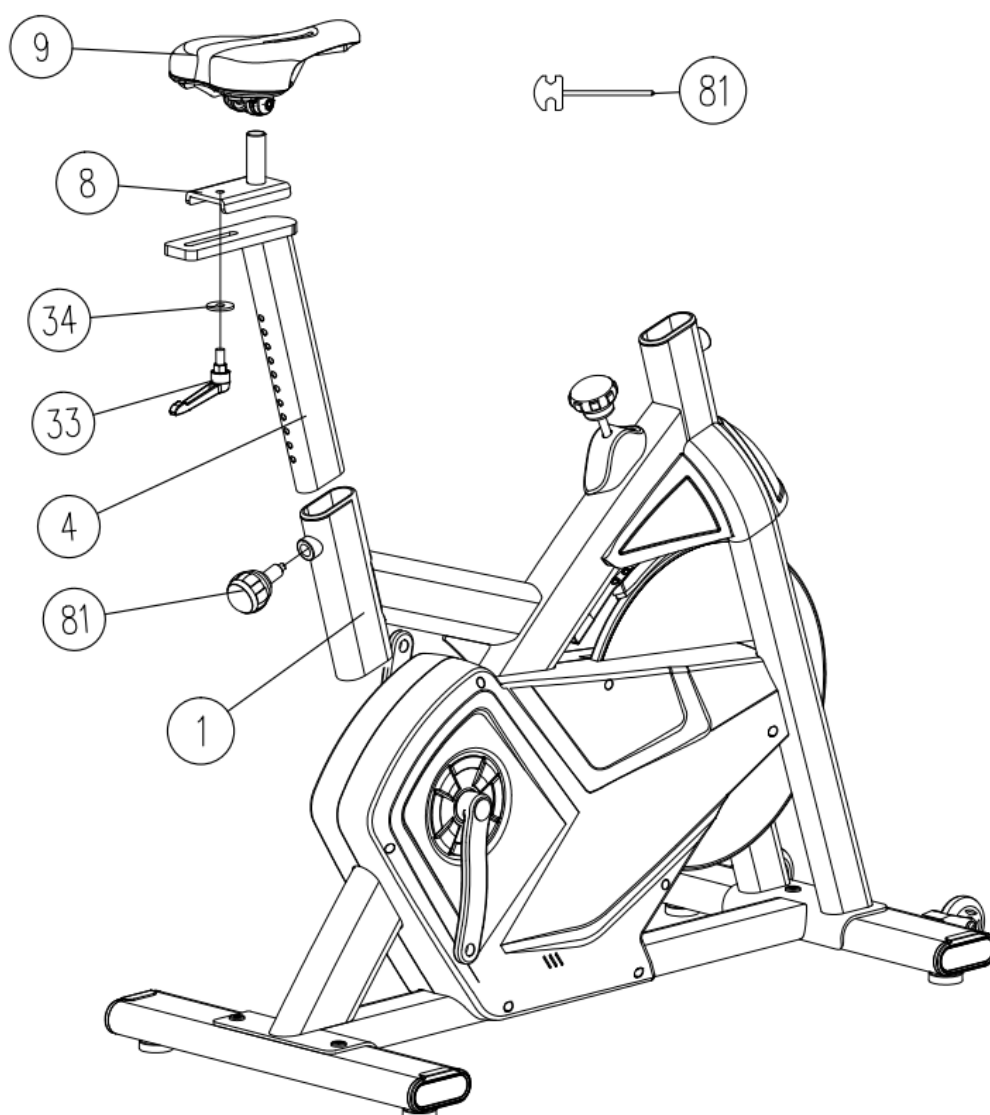
## ASSEMBLY INSTRUCTION



### STEP 1

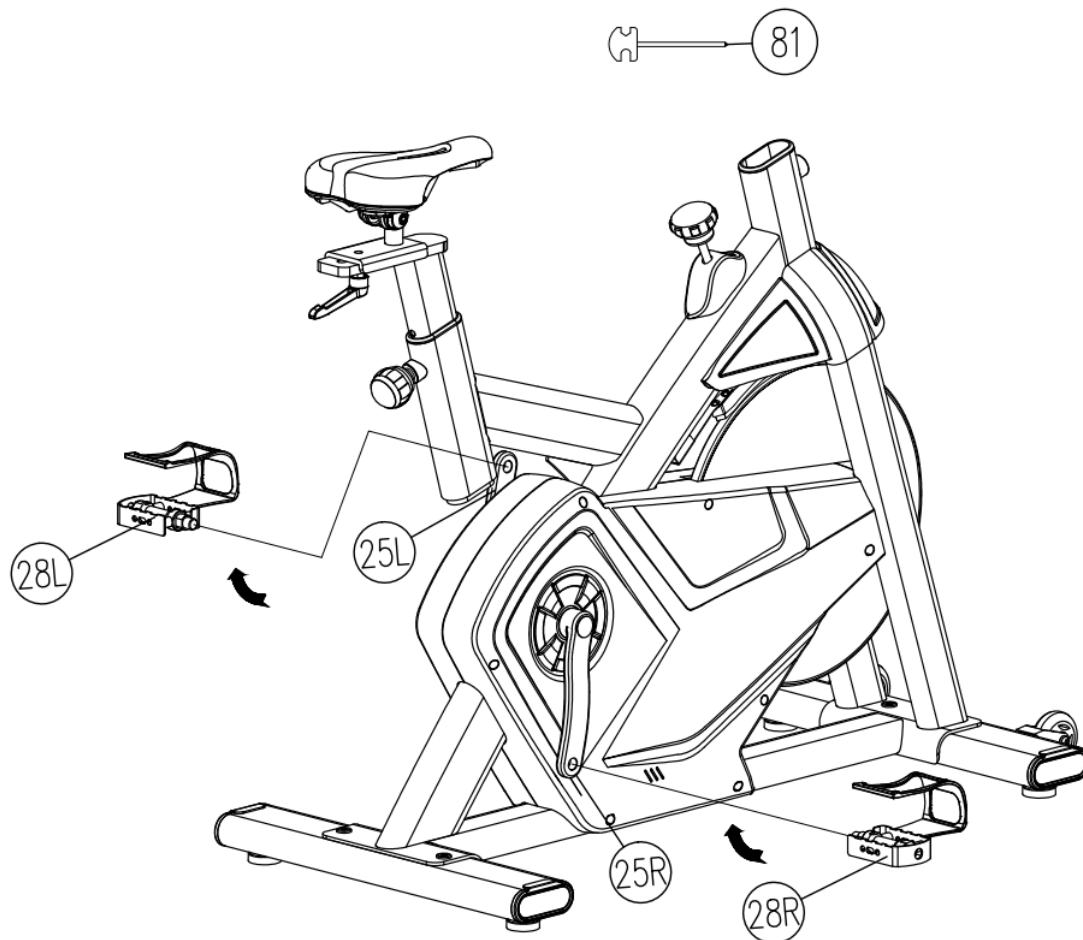
Attach the rear tube (3) to the main frame(1) using two sets of cap nut(13)by hexagon wrench(82).

Attach the front tube (2) to the main frame same as the rear tube.



## STEP 2

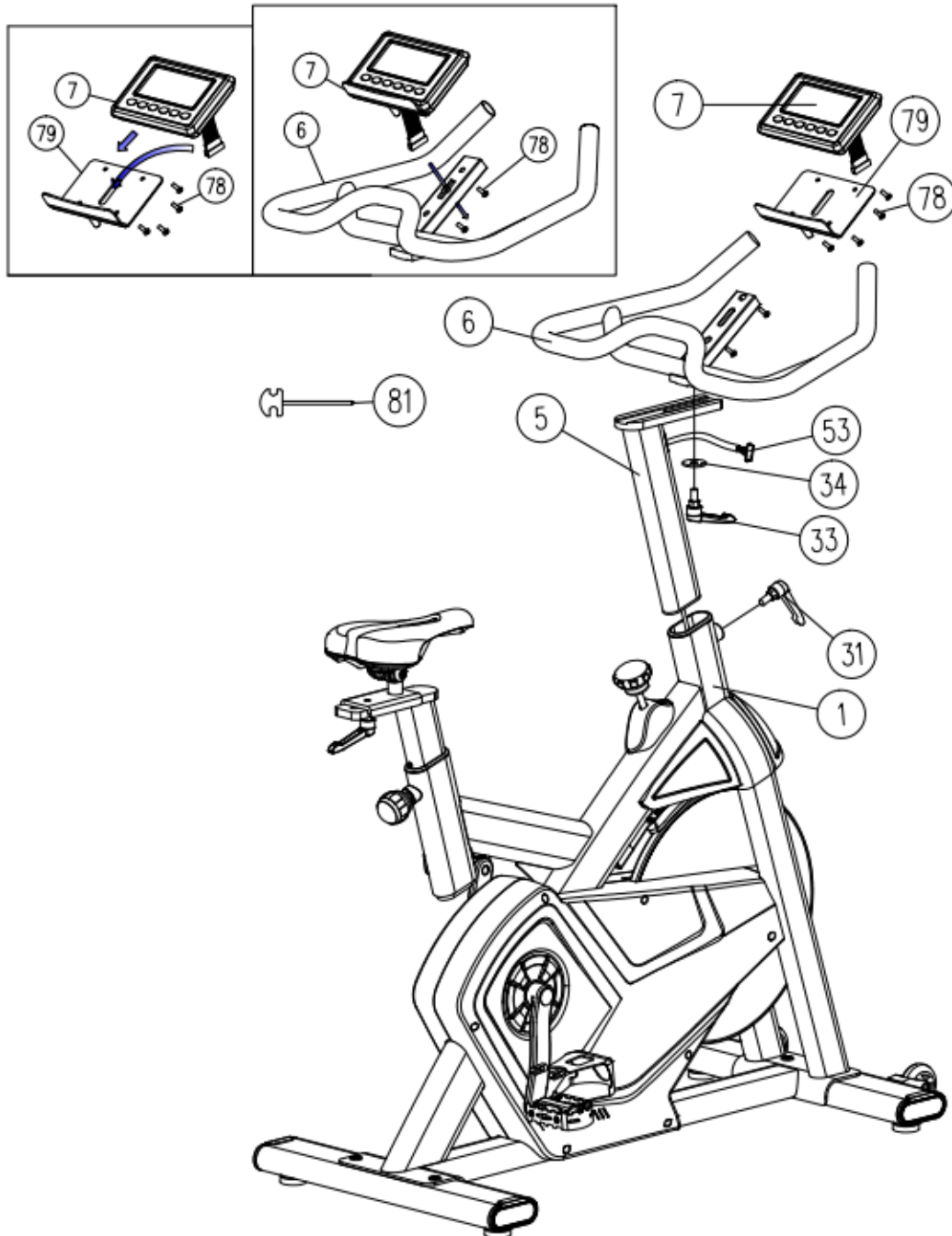
Put seat post (4) insert main frame with knob (81) adjust height.  
 Attach slider(8) to seat post by washer(34) and Knob(33).  
 Put seat (9) on the slider(8) and fix it by harpoon wrench(81).



### STEP 3

The pedals (28L and 28R) are marked "L" and "R"-left and right. Connect them to their appropriate crank set (25L and 25R) by harpoon wrench (81).

The right crank set is on the right hand side of the cycle as you sit on it. Note that the Right pedal should be threaded on clockwise and the left pedal on anti-clockwise.



## STEP 4

Fix the i-pad shelf(79) on the handlebar(6) using screws(78),put computer(7) into i-pad shelf, and fix handlebar on handlebar post(5) by washer(34) and knob(33), then put handlebar on the main frame by knob(31). And insert the sensor plug(53) into the sensor joint of computer.

Now your spinning bike is finished for use.



GARLANDO SPA  
Via Regione Piemonte, 32 - Zona Industriale D1  
15068 - Pozzolo Formigaro (AL) - Italy  
[www.toorx.it](http://www.toorx.it) - [info@toorx.it](mailto:info@toorx.it)