

**TCORX**  
FITNESS IN MOTION

# INSTRUCTION



**BRXR 65 COMFORT**





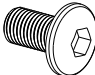

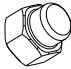

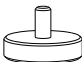
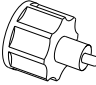
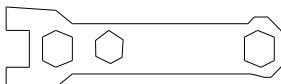
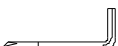
Cod : GRLDTCORXBRXR65COMFORT

Rev : 00

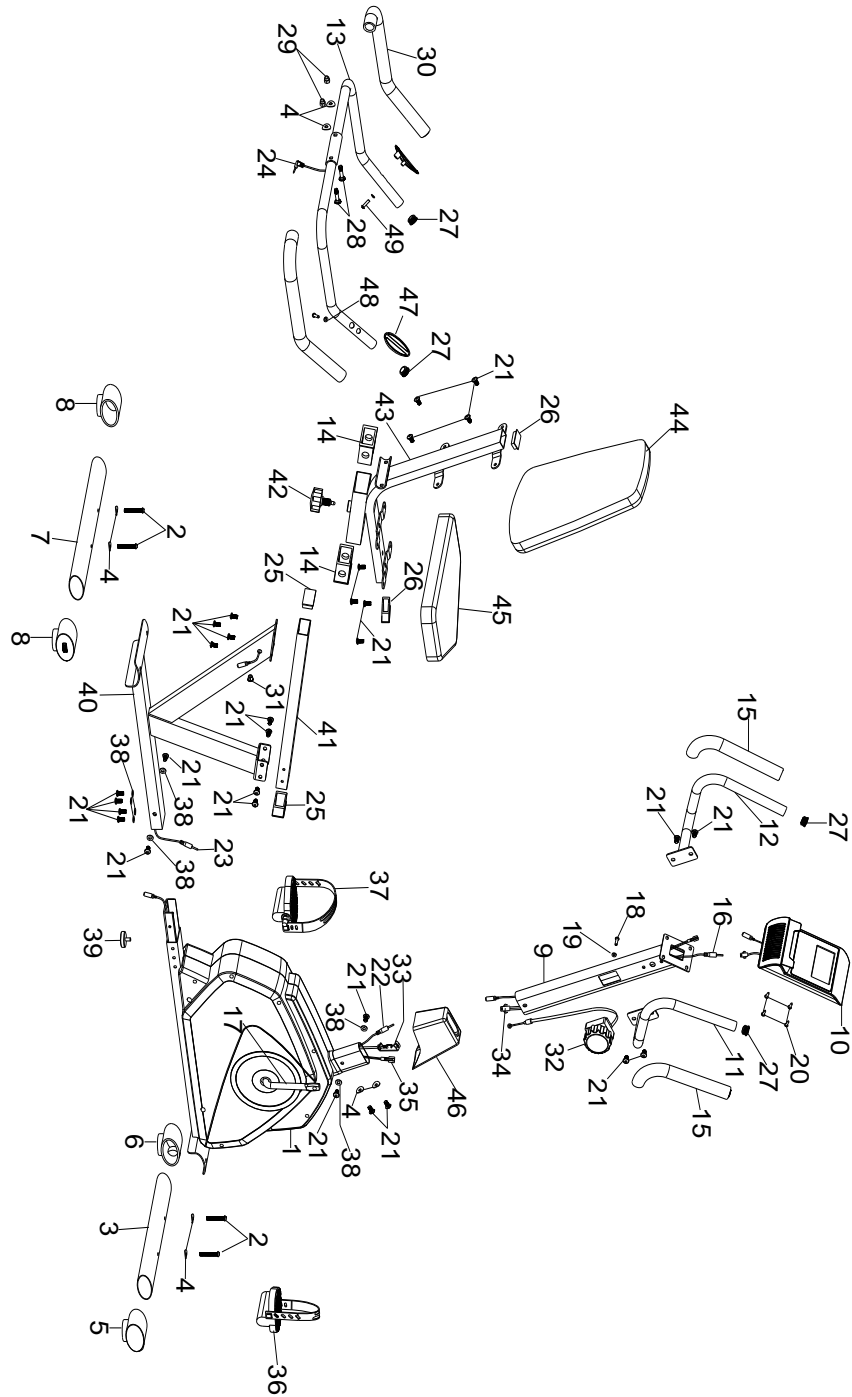
Ed : 11/18



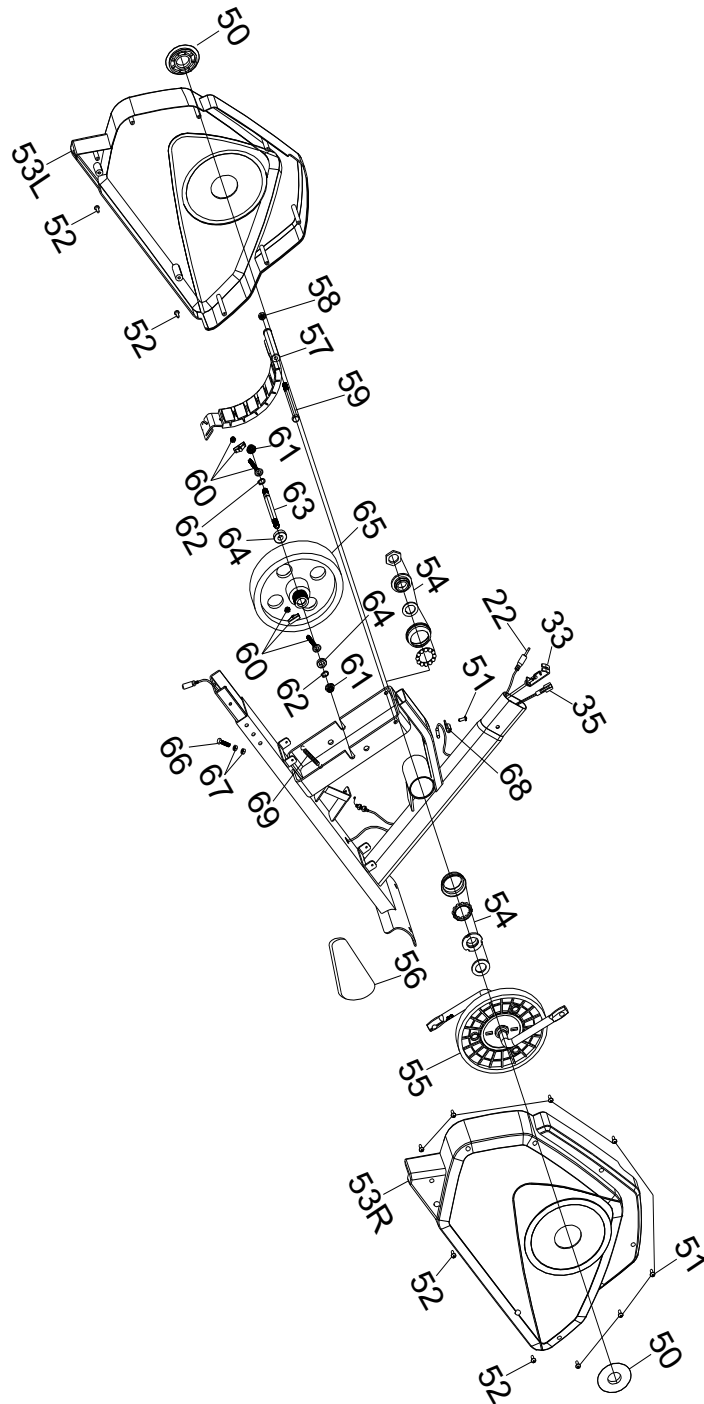
## Hardware

No.	Description	Qty	Drawing
2	Allen screw M8*50	4	
4	Curve washer $\Phi 8 * \Phi 20 * 1.5$	8	
21	Allen screw M8*16	30	
28	Carriage bolt M8*40	2	
29	Domed nut M8	2	
38	Flat washer $\Phi 17 * \Phi 8.5$	8	
39	Foot pad	1	
42	Quick release knob	1	
	Allen key	1	
	Allen wrench	1	

# EXPLODED DIAGRAM



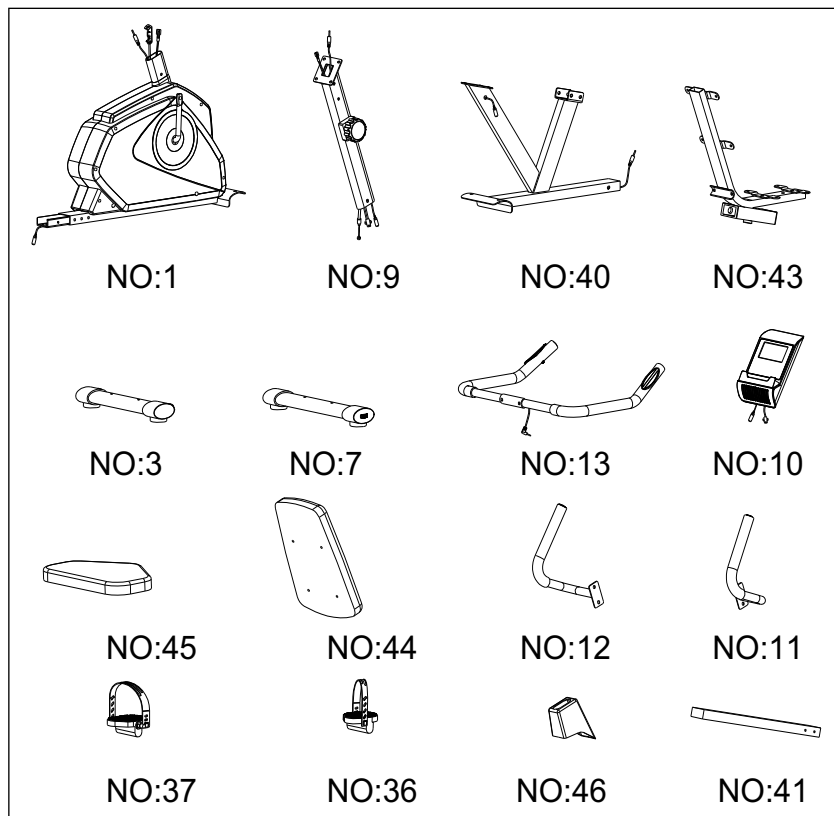
# EXPLODED DIAGRAM



## PARTS LIST

NO.	Description	Qty	NO.	Description	Qty
1	Main Frame	1	36	Pedal R	1
2	Allen Bolt M8*50	4	37	Pedal L	1
3	Front Stabilizer	1	38	Flat washerΦ17*Φ8.5	8
4	Curve washerΦ8	8	39	Foot pad	1
5	End cap for front stabilizer R	1	40	Seat post	1
6	End cap for front stabilizer L	1	41	Sliding tube	1
7	Rear stabilizer	1	42	Quick release knob	1
8	End cap for rear stabilizer	2	43	Cushion post	1
9	Front post	1	44	Cushion	1
10	computer	1	45	seat	1
11	Handlebar R	1	46	Cover for front post	1
12	Handlebar L	1	47	Hand pulse sensor	2
13	Back handlebar	1	48	Washer	2
14	Bushing	2	49	Self-tapping screw	2
15	Foam grip for handlebar	2	50	Cover for crank	2
16	Upper hand pulse wire	1	51	Self-tapping screw ST5	8
17	Crank	1	52	Self-tapping screw ST5*20	4
18	Screw M5	1	53	Chain cover L/R	1/1
19	WasherΦ12*Φ6	1	54	BB assembly	1
20	Screw M5*10	4	55	Pulley	1
21	Allen Bolt M8*16	30	56	Belt	1
22	Middle hand pulse wire	1	57	Magnet assembly	1
23	Lower hand pulse wire	1	58	Nut M8	1
24	Hand pulse wire	1	59	Bolt M8*105	1
25	End cap for sliding tube	2	60	Flywheel adjustor	2
26	End cap for seat post	2	61	France nut	2
27	End cap for handlebar	4	62	C-clip	2
28	Carriage bolt M8*40	2	63	Axle for flywheel	1
29	Domed nut M8	2	64	Bearing 6001	2
30	Foam grip for handlebar	2	65	Flywheel	1
31	Grommet	1	66	Screw M6	1
32	Tension knob	1	67	Nut M6	2
33	Lower tension cable	1	68	Sensor bracket	1
34	Upper sensor wire	1	69	Spring	1
35	Lower sensor wire	1			

## PRE-ASSEMBLY CHECK LIST

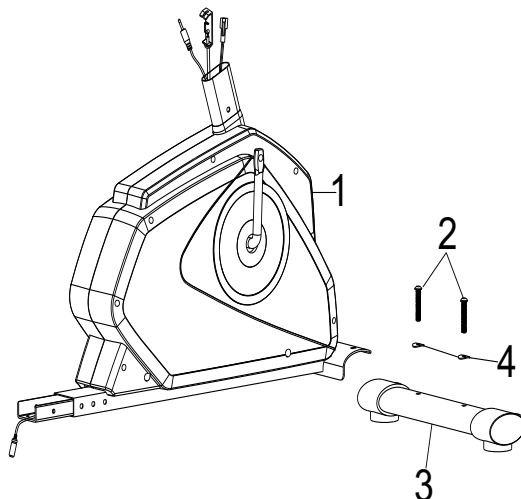


NO.	Description	Qty
1	Main Frame	1
3	Front Stabilizer	1
7	Rear Stabilizer	1
9	Front post	1
10	computer	1
11	Handlebar R	1
12	Handlebar L	1
13	Back handlebar	1
36	Pedal Right	1
37	Pedal Left	1
40	Seat post	1
41	Sliding tube	1
43	Cushion post	1
44	Cushion	1
45	seat	1

# ASSEMBLY INSTRUCTION

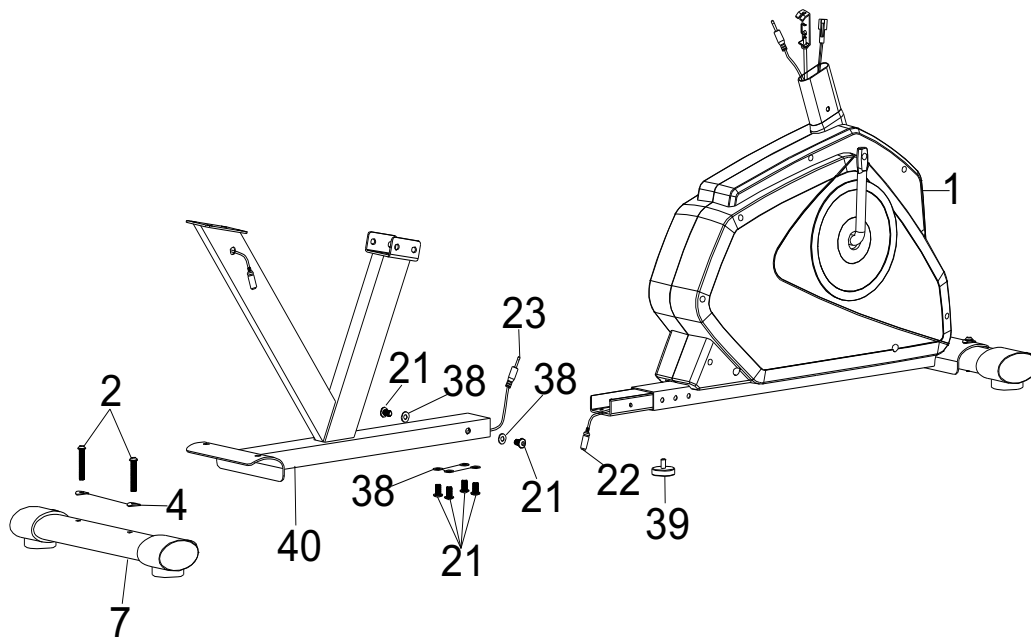
## Step 1:

- Attach the front stabilizer (3) to the main frame (1), secure using two allen bolts (2) and two curve washers (4)



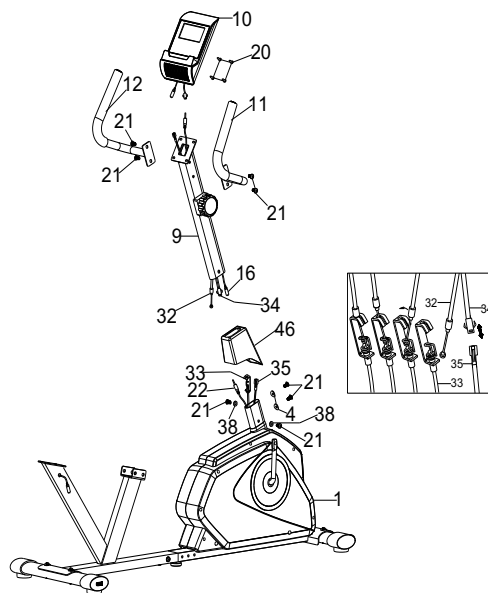
## Step 2:

- Connect the lower hand pulse wire (23) to the middle hand pulse wire (22).
- Insert the seat post (40) to the main frame (1) secure using two allen screws (21), two flat washers (38), four allen bolts (21) and four flat washers (38).
- Secure the foot pad (39).
- Attach the rear stabilizer (7) to seat post (40). Secure using two allen bolts (2) and two curve washers (4)



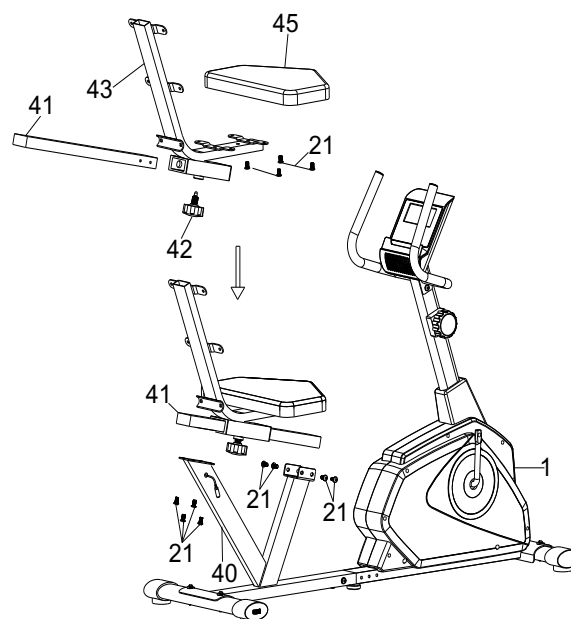
### Step 3:

- Place the front post cover(46) into front post(9) first.
- Adjust the tension cable (32) to the level eight and slot into the lower tension cable (33). Connect the extension sensor wire (34) to the lower sensor wire (35). Connect the upper hand pulse wire(16) to the middle hand pulse wire (22).
- Attach the front post (9) to the main frame (1). Secure using two allen bolts(21) with two flat washers (38) and two allen bolts(21) with two curve washers(4).
- Attach the right handlebar (11) and the left handlebar (12) to the front post (9), secure using two allen bolts (21).
- Attach the computer (10) to the front post (9), then connect the upper hand pulse wire(16) and the upper sensor wire(34) to the computer,secure using four screws(20).



### Step 4:

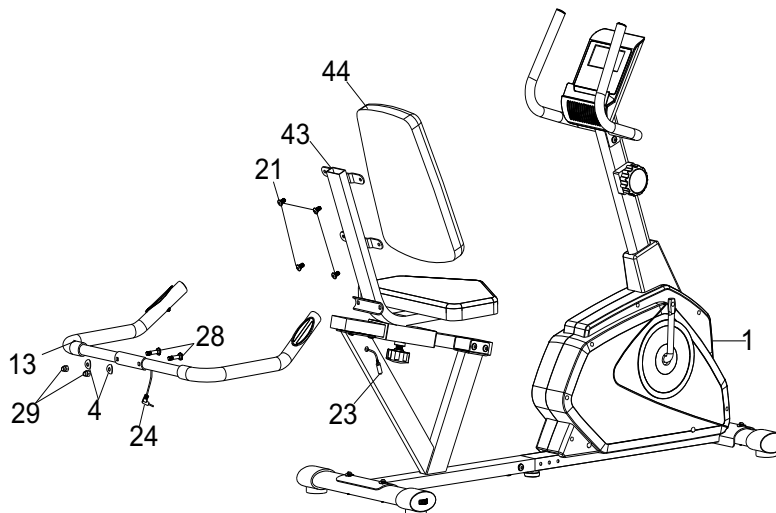
- Insert the sliding tube (41) to the cushion post (43),secure using quick release knob (42) into your desired position, attach the seat (45) to the cushion post (43), secure using four allen bolts (21) .
- Then attach the whole seat set to the seat post (40), secure using eight allen bolts (21).



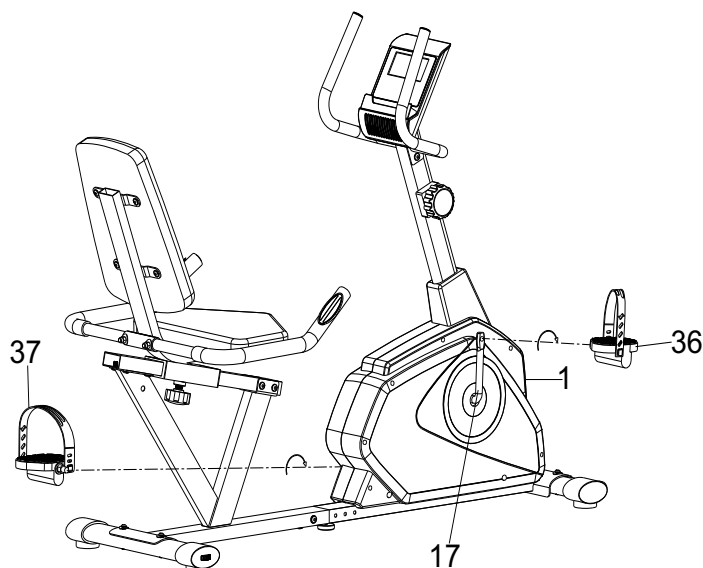


**Step 5:**

- Connect the lower hand pulse wire (23) to the hand pulse wire (24).
- Attach the back handlebar (13) to the cushion post (43), secure using two sets of curve washer (4), carriage bolts (28) and domed nut (29).
- Attach the cushion (44) to the cushion post (43), secure using four allen bolts (21).

**Step 6**

- Attach the pedal right (36) to the crank (17) right side secure with clockwise.
- Attach the pedal left (37) to the crank (17) left side secure with counterclockwise.



**CHECK ALL BOLTS AND NUTS ARE TIGHTENE  
BEFORE USING THE MACHINE**

# COMPUTER INSTRUCTIONS

## FUNCTIONAL BUTTONS:

**MODE** - Push down for selecting functions.

**SET** -To set the values of time、 distance、 calories and pulse when not in scan mode.

**RESET** - Push down for resetting time、 distance and calories.

## FUNCTION AND OPERATIONS:

**1.SCAN:** Press “MODE” button until “SCAN” appears, monitor will rotate through all the 5 functions:  
Time、 speed、 distance、 calorie ODO and pulse. Each display will be hold 4 seconds.

**2.TIME:** (1) Count the total time from exercise start to end.  
(2) Press “MODE” button until “TIME” appears, press “SET” button to set exercise time. When the “set” is zero,  
the computer will alarm 15 seconds.

**3.SPEED:** Display current speed.

**4.DIST:** (1) Count the distance from exercise start to end.  
(2) Press “MODE” button until “DIST” appears. Press “SET” button to set exercise distance.  
When the “set” is zero, the computer will alarm 15 seconds.

**5.CALORIES:** (1) Count the total calories from exercise start to end.  
(2) Press “MODE” button unit “CAL” appears. Press “SET” button to set exercise calories. When the “set” is zero, the computer will alarm 15 seconds.

**6. ODO:** Monitor will display the total accumulated distance.

**7. PULSE:** Press MODE button until “PULSE” appears. Before measuring your pulse rate, please place your palms of your hands on Both of your contact pads and the monitor will show your current heart beat rate in beats per minute(BPM) on the LCD after 6~7 seconds.  
Remark: During the process of pulse measurement, because of the contact jamming, the measurement value may be higher than the virtual pulse rate during the first 2~3 seconds, then will return to normal level. The measurement value can not be regarded as the basis of medical treatment.

## NOTE:

1. If the display is faint or shows no figures ,please replace the batteries.
2. The monitor will automatically shut off if there is no signal received after 4 minutes .
3. The monitor will be auto-powered on when starting to exercise push button w/signal in.
4. The monitor will automatically start calculating when you start to exercise and will stop calculating when you stop exercising for 4 seconds .

**SPECIFICATIONS:**

FUNCTION	AUTO SCAN	Every 4 seconds
	TIME	00:00'~99:59'
	CURRENT SPEED	The maximum signal can be pickup is 99.9KM/H
	TRIP DISTANCE	0.00~99.99KM or 0.00~9999KM
	CALORIES	0.1~999.9kCAL
	ODO	0.1~999.9KM or 1 ~ 9999KM
	PULSE RATE	40~206BPM
BATTERY TYPE		2pcs of SIZE –AA or UM –3
OPERATING TEMPERATURE		0°C ~ +40°C
STORAGE TEMPERATURE		-10°C ~ +60°C

scan time speed dist cal ODO pulse 3V



GARLANDO SPA  
Via Regione Piemonte, 32 - Zona Industriale D1  
15068 - Pozzolo Formigaro (AL) - Italy  
[www.toorx.it](http://www.toorx.it) - [info@toorx.it](mailto:info@toorx.it)